

SonoScape

Caring for Life through Innovation

X - S E R I E S
V E T E R I N A R Y

Company Milestone

2002: Company Founded in Shenzhen, China

2008: Received "European Entrepreneurial Company 2008" award from FROST & SULLIVAN

2009: Received "Product Quality Leadership Award 2009" from FROST & SULLIVAN

2011: Received the Reddot 2011 Product Design Award for S20 in Essen, Germany

2013: Received "Ultrasound Market Growth Leadership Award, 2013" from FROST & SULLIVAN

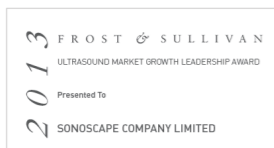
2014: Received the iF product design award 2014 for S9 in Munich, Germany

2014: Received "Company of the Year in Ultrasound Market, 2014" from FROST & SULLIVAN

2016: Received "Product innovation in Electronic Endoscopy Market" from FROST & SULLIVAN

2017: Received the iF product design award 2017 for X5 in Munich, Germany

2017: Listed on the Shenzhen Stock Exchange in April



ISO 13485

CE 0197

SonoScape

SonoScape Medical Corp.

Yizhe Building, Yuquan Road, Shenzhen, 518051, China

Tel: 86-755-26722890 Fax: 86-755-26722850

E-mail: market@sonoscape.net www.sonoscape.net

U-XSV20180425





The X Series Vet platform is a laptop color Doppler ultrasound system designed with high quality images out in the field. X Series Vet is equipped with SonoScape's superior imaging technology, providing professional veterinary software catering to a wide variety of animals ranging from small companion animals to large farm animals. Its crystal clear imaging and smooth workflow creates a new and improved examination experience that provides the accuracy you need for a confident diagnosis.

Efficient Experience

Since X Series Vet adopts SonoScape's latest imaging technologies to produce excellent images with high resolution and deep penetration, presenting a large amount of information onto the ultrasound screen. Improved image quality will allow for faster and more accurate exams of any species.

- Multi-beam processing technology
- C-field beam technology
- Spatial compound imaging
- μ -Scan image processing technology
- Pure inversion harmonic imaging

Professional Veterinary

With advanced features typically available on high end systems, the X Series Vet can cover all of your diagnostic imaging needs in one system.



Dedicated fully configured veterinary software package



Linear, convex, micro-convex and specialty transducers, with frequencies from 1-16 MHz



User-definable graphic exam modes for companion animals, farm animals, lab animals and equines








Variety of accessories including keyboard cover, standoff, biopsy guides and trolley

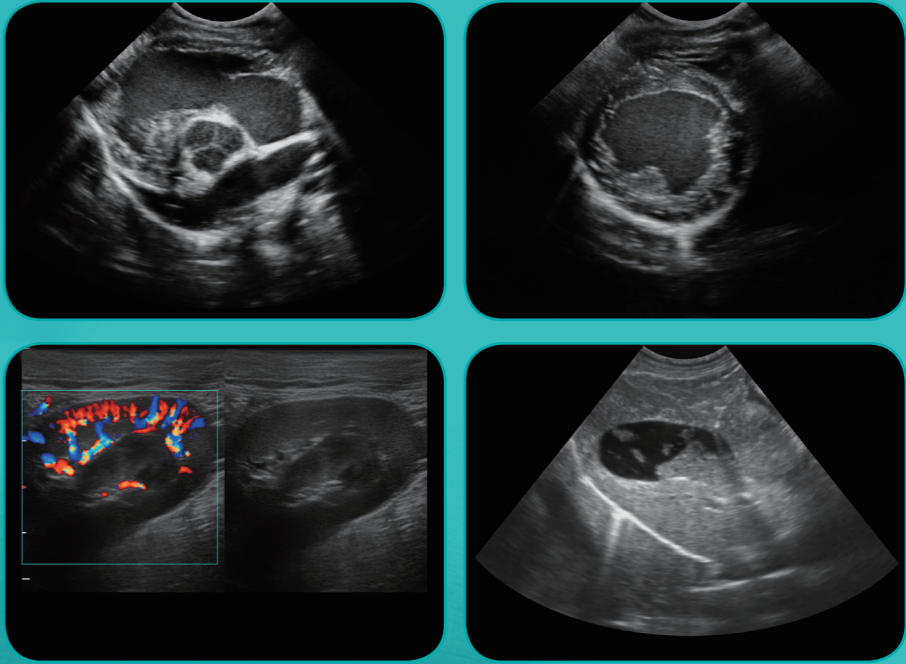




COMPANION ANIMALS

The companion animal package provides users with complete solutions for a variety of applications and animals. From the high definition screen and control panel design to the boot up speed and preset examination options, the X Series Vet accessories the examination process.

-  15.6 inch high definition LED monitor with a large display region
-  Noiseless system to prevent startling the animals
-  Boot up quickly with predetermined exam settings loaded and ready
-  Auto brightness adjustment screen and backlit control panel
-  Keyboard cover to avoid fluids and dust



EQUINE

Combining efficiency, simplicity and versatility, the X Series Vet is a great choice for equine examinations. Equipped with specialty transducers and equine specific software, it easily produces stunning images across necessary applications for equines such as MSK, reproductive organs, and has the penetration needed for abdominal and cardiac scanning as well.



Advanced imaging technologies for high quality images to satisfy various practices, academia, research, and wildlife



Satisfying equine presets for cardiac, abdominal, tendon, and reproductive evaluation



Dedicated measurement, calculation, and annotation for each exam mode



180° Wide range folding angle and viewing angle



Anti-reflective screen and a backlit keyboard



Splash resistant and dust proof keyboard protective covering

