

LINKEDIN



FACEBOOK



WEBSITE

Shenzhen Lanmage Medical Technology Co., Ltd.

No.103, Baguang Service Center, No.2 Baisha Bay Road, Baguang Community,
Kuichong Subdistrict, Dapeng New District, Shenzhen, 518119, Guangdong, P.R. China

Website: en.Lanmage.com

E-mail: oversea@lanmage.com

©copyright2022 Shenzhen Lanmage Medical Technology Co., Ltd. All rights reserved.

CFDA CE  EN ISO 13485:2016

Exquisite & Reliable

Mobile Radiographic Truck Unit



High Performance

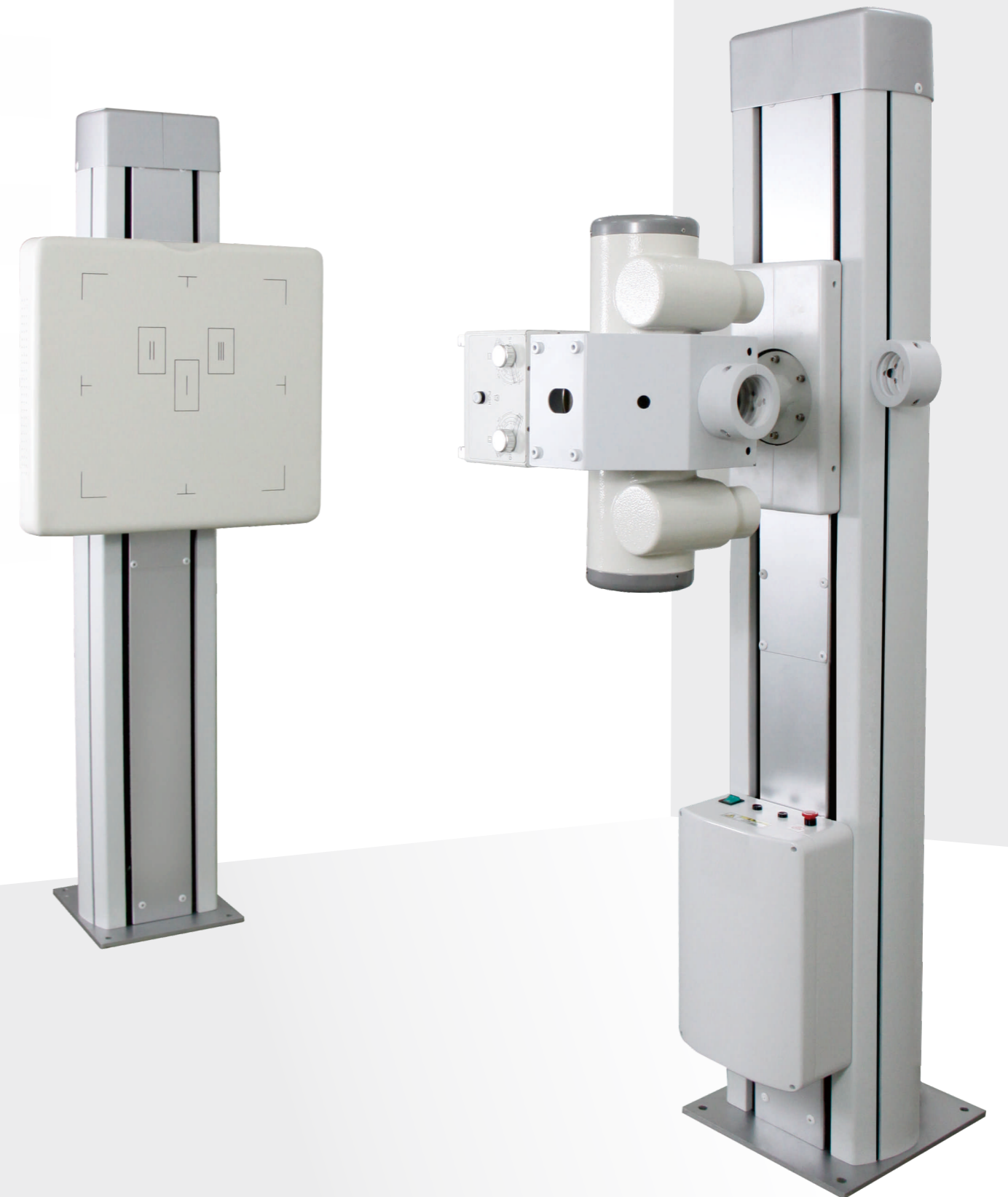
High-frequency generator and high-definition CsI flat-panel detector combined offer superb dose efficiency and high image quality in van.

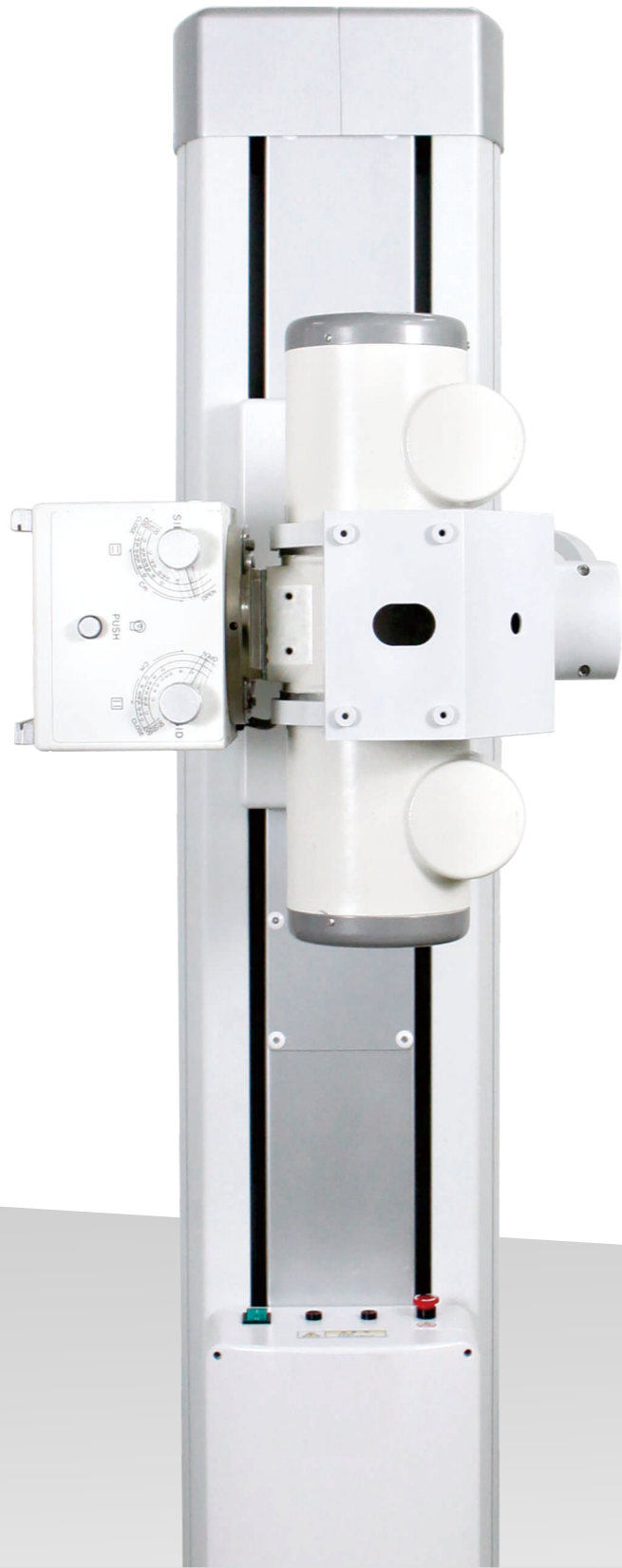


Easy Installation

The whole unit is extreme light and space-saving.

It can be easily fit in various kinds of cars, from 6m long Coaster to 12m long passenger car.





Easy Operation

- Classic double column structure.
- Easy positioning with electric control.
- Remote control system greatly improves the efficiency on clinic applications.



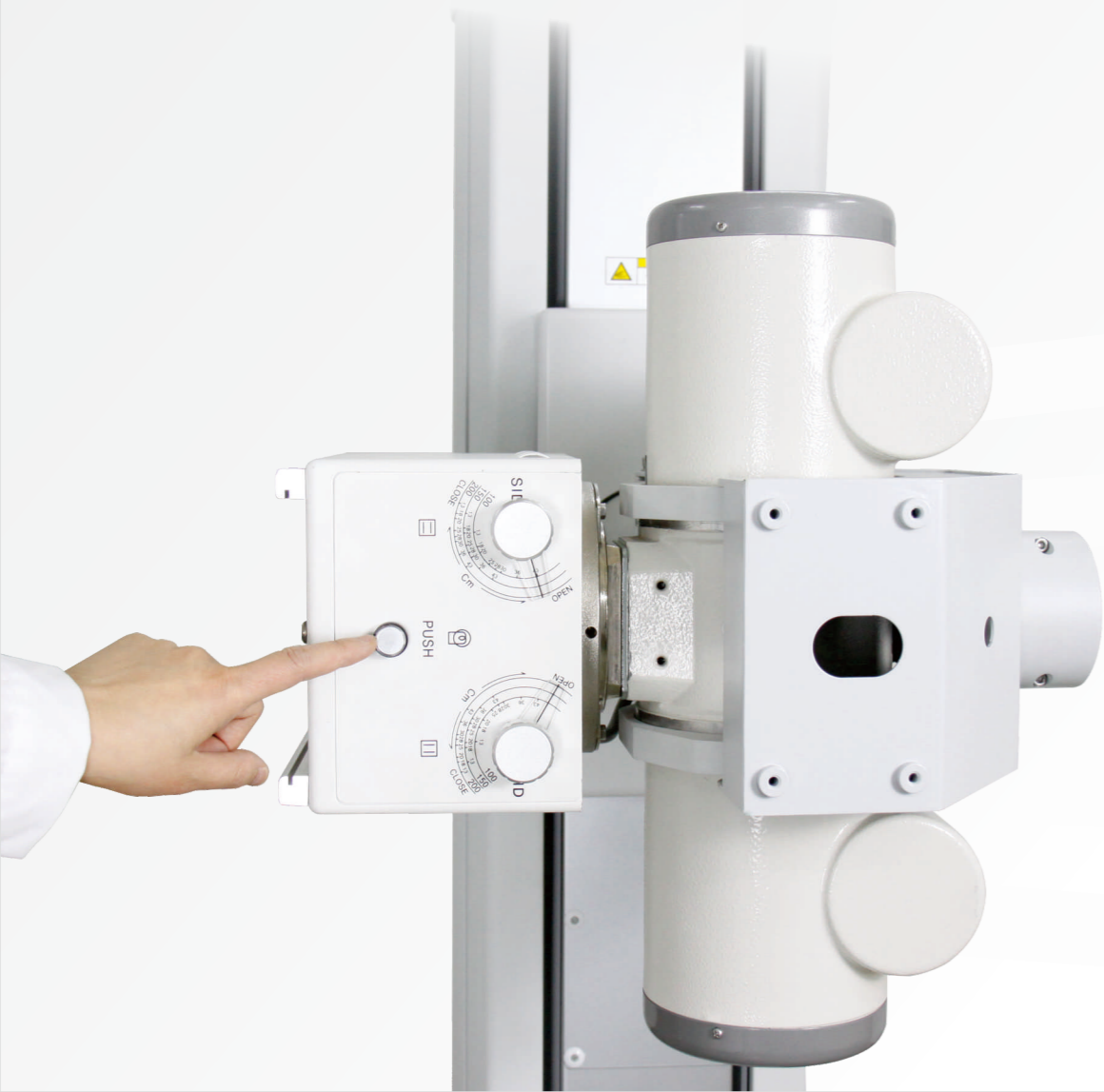
Health Check Mode

- Batch import of Excel table.
- One click image export.
- Pneumoconiosis mode to ensure the accuracy of occupational disease screening.



Easy Operation

The digital image chain system integrates the functions of information input, exposure acquisition, image display, diagnostic report editing and printing, image output etc.



Excellent Compatibility

- The system is compatible with DICOM 3.0 for seamless connection.
- It is fully compatible with distinct systems including HIS, RIS, WORKLIST and PACS in the hospital. Printer connection is also available.



High-resolution Images



• Chest



• Pneumoconiosis